

Things You Never Knew About

FEMA



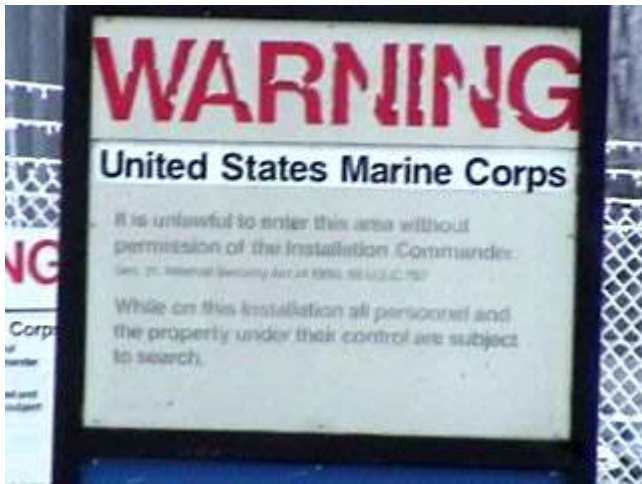
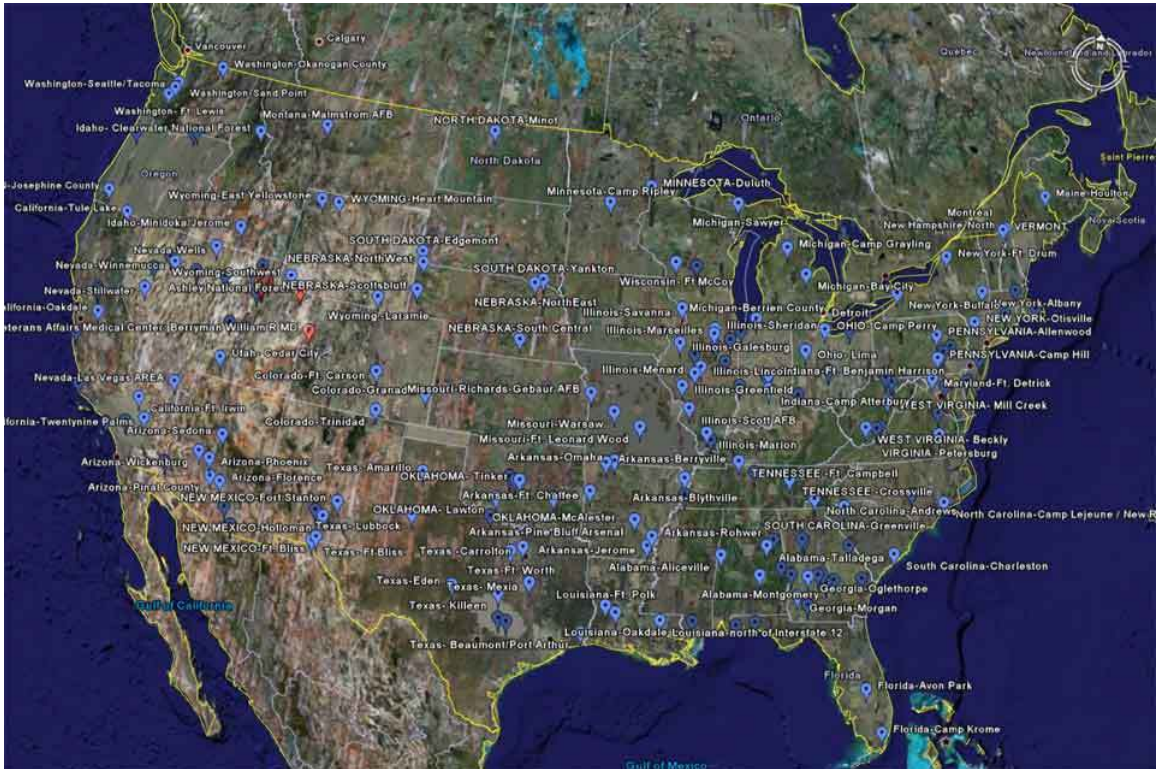
By: B.A. Brooks

A Word From B.A. Brooks



We have to look at all of the evidence and try to see the big picture. Could *ALL* of this information be real and true, or are these just more conspiracy theories? Yes and No! There are many truths weaved in between lies and misconceptions. Many things that people believe are simply not true, and many things people do not want to believe are very true. Look into (HR 645), FM 3-19.40, Rex 84, Operation Gardenplot, Operation Cable Splicer, CILFs (Civilian Inmate Labor Facilities) and Military Police Internment/Resettlement Operations, because these are the real subjects to research and discuss. I have been accused of trying to scare the mass population with this book, but in reality I am only presenting news that I have researched, in one place for the world to see. Nothing more, nothing less. All of my resources are listed on at the end of this book for you the reader to research and validate or debunk. Now I will say that these red list / blue list stories have been circulating for well over twenty years now and a lot of these supposed prison train cars reported to be equipped with benches and shackles that I personally have seen are simply just car haulers with ramps for the cars to sit on, and the chains are to keep them tied down in place. Many of the FEMA Camp videos circulating on Youtube and other sites have been debunked by a number of investigative journalists such as Alex Jones and a few others. So try and be objective and look at what is real. There is a lot of misinformation and disinformation out there, and it is easy to get confused or misled by things that simply are not real. We do know that a Halliburton subsidiary received a \$385 million contract from DHS to provide detention centers with processing capabilities. Something else we know is that our government and it's multitude of covert agencies love to make lists, and the TSA's NO FLY list has well over one million people now marked. So is it possible that there is a Red List? Absolutely! Look at H.R. 645 a.s.a.p.! This is brand new legislation regarding FEMA Camps. My suggestions now are to stock up on food, water, guns and ammo, because it is a total illusion that the USA will continue on, business as usual. Read my book "Surviving The NWO" to advance to the next level of understanding in providing options for yourself and your family. Knowledge is power! Learn, look, watch, listen, share, train, prepare, wait, stock your food and water supplies. Check at The UAFF/ARM website for daily updates from within America and around the world.

FEMA CONCENTRATION CAMPS?



Definitions

REX 84 is short for Readiness Exercise 1984. Through Rex-84 an undisclosed number of concentration camps were set in operation throughout the United States, for internment of dissidents and others potentially harmful to the state. These camps are to be operated by FEMA should martial law need to be implemented in the United States and all it would take is a presidential signature on a proclamation and the attorney general's signature on a warrant to which a list of names is attached."

Operation Cable Splicer is a subprogram of the Rex 84 Program, which "was established on the reasoning that if a 'mass exodus' of illegal aliens crossed the Mexican/US border, they would be quickly rounded up and detained in detention centers by FEMA. Rex 84 allowed many military bases to be closed down and to be turned into prisons." Operation Cable Splicer is "the program for an orderly takeover of the state and local governments by the federal government. FEMA is the executive arm of the coming police state and thus will head up all operations. The Presidential Executive Orders already listed on the Federal Register also are part of the legal framework for this operation."

Operation Garden Plot is a general U.S. Army and National Guard plan to respond to major domestic civil disturbances within the U.S.. The plan was developed in response to the civil disorders of the 1960s and is now under the control of the U.S. Northern Command (NORTHCOM). It provides Federal military and law enforcement assistance to local governments during times of major civil disturbances. Garden Plot was last activated (as Noble Eagle) to provide military assistance to civil authorities following the September 11, 2001 attacks on the United States. The Pentagon also activated it to restore order during the 1992 Los Angeles Riots. Under Homeland Security restructuring, it has been suggested that similar models be followed. "Oversight of these homeland security missions should be provided by the National Guard Bureau based on the long-standing Garden Plot model in which National Guard units are trained and equipped to support civil authorities in crowd control and civil disturbance missions."

The Civilian Inmate Labor Program is a program of the United States Army provided by Army Regulation 210-35. The regulation, first drafted in 1997, underwent a "rapid act revision" in January 2005; it provides policy for the creation of labor programs and prison camps on Army installations. The labor would be provided by persons under the supervision of the Federal Bureau of Prisons. The regulation states that labor programs benefit the Army and the corrections facilities by supplying "a source of labor at no direct cost to the Army," giving "meaningful work to inmates" and alleviation to "overcrowding in nearby corrections facilities" and by making use of otherwise unused land and buildings. The regulation also sets forth policy for the creation of prison camps on Army installations. These would be used to keep inmates of the labor programs resident on the installations.

FM 3-19-40 The infrastructure for incarcerating and executing resisters and dissenters in the coming American Holocaust has been already set up, according to the 1968 government plans code-named Operation Cable Splicer and Garden Plot (FM 19-15), sub programs of the Rex 84 Program. Field Manual 3-19.40 or FM 19-40 is the August 2001 version of Military Police Internment/Resettlement Operations. This publication supersedes the FM 19-40 of February 1976 and FM 19-60 of May 1986 by order of the Secretary of the Army signed by administrative assistant, Joel B. Hudson. Pending the approval of the Army Chief of Staff, the military can detain and jail citizens en masse.

Red List - Blue List - Yellow List - Black List Definitions

We are all on a **Red** or **Blue** list somewhere, those on the red list will be woken at 4am and taken to the camps and probably killed.

Red List - These people are the enemies of the NWO. They are the leaders of patriot groups, outspoken ministers, outspoken talk show hosts, community leaders, and even probably NET leaders. These people will be dragged out of their homes at 4:00 am and will be taken to FEMA detention centers and killed. This will take place approximately 2 weeks before martial law is enforced.

Blue List - These are also enemies of the NWO, but are followers of the Red List folks. These people will be rounded up after martial law is in place, and will be taken to the detention centers and 're-educated'. Various mind-control techniques will be used on them. Most will not survive this. Mr. Springmeier was not specific on exactly who was on the Blue List, but I would guess that people such as you and I are on that list.

Yellow List - These are citizens who know nothing about the NWO and don't want to know. They are considered to be no threat at all and will be instructed as to how to behave and will most likely do whatever they are told. Unfortunately there are too many of these to be effectively controlled, so many will be killed or starved.

Black List - I have recently heard that the red and blue lists have been combined into one, and is called The Black List. All black listed citizens will be marked for execution.



FEMA COFFINS?

There are reports all over the internet connecting FEMA with multiple locations which are storing hundreds of thousands of plastic coffins. After researching these reports I have found these to actually be coffin liners used to contain a coffin before backfilling the grave with dirt. Although there are many reported documents linking these back to FEMA, I have not seen any personally. Recently Freedom Fighter Radio stopped by one location in Georgia and interviewed a supervisor who claimed no connections to FEMA and that they sell these to cemeteries worldwide. (Link on resource page)

W.G. (BILL) HEFNER
8TH DISTRICT, NORTH CAROLINA

2470 RAYBURN HOUSE OFFICE BUILDING
WASHINGTON, DC 20515
(202) 225-1719
FAX (202) 225-4036

COMMITTEES:
COMMITTEE ON APPROPRIATIONS
SUBCOMMITTEE ON DEFENSE
RANKING MEMBER
SUBCOMMITTEE ON MILITARY
CONSTRUCTION

Congress of the United States
House of Representatives
Washington, DC 20515-3308

DISTRICT OFFICES
P.O. BOX 385
101 UNION STREET, SOUTH
CONCORD, NC 28029
(704) 833-1815 OR 785-1812
FAX (704) 783-1004

P.O. BOX 4220
123 S. MAIN STREET
CENTER COURT
SALISBURY, NC 28144
(704) 836-0826
FAX (704) 833-6271

P.O. BOX 1503
270 EAST FRANKLIN STREET
ROCKINGHAM, NC 28379
(910) 987-2070
FAX (910) 987-7967

March 24, 1997

Mr. Zell Setzer
P.O. Box 4198
Salisbury, NC 28145

Dear Mr. Setzer:

Enclosed is the information you requested pertaining to the Army's policy and guidance for establishing civilian inmate labor program and civilian prison camps on Army installations. This information has not yet been published (it is currently at the printers), however, it has been funded, staffed, and does reflect current Army policy. I hope you find this information useful.

With kindest regards, I am

Sincerely yours,

Bill Hefner

BILL HEFNER
Member of Congress

BH/ey

Enclosure

A More In Depth Look At The RED And BLUE Lists

Mr. Sea is a former inspector for the Joint Chiefs of Staff and the Department of Defense. Here Mr. Sea elaborates on the 'RED and BLUE Lists' and what they mean. The RED List is for pick-up and execution before unobtrusive preparations for martial law are initiated. The BLUE List is also for execution, but later, within 6 weeks of martial law declaration. When you get picked up on a **RED** pick-up, they'll take you from your home at night, probably around 4 am and put you in a black van, then drive you to a helicopter waiting to fly you to an intermediate point. There, you'll be loaded onto a big 64-passenger CH-47 Chinook helicopter and fly you to one of 38 cities where you'll board a 747, 737, or 727. You may be taken straight to a red camp and executed. At some point, martial law will be declared. Martial law is when the writ of Habeas Corpus to have a trial by jury is suspended. Instead, of going to the judge, you go straight to jail. At this point, the **BLUE** listed people will be picked up. At that time, the country will be regionalized into ten regions, which are already designated by FEMA. The black choppers have state-of-the-art radio (RF) frequency wideband jammers, and can jam cell phones and CBs while they're executing black operations missions. This means that your cell phone could be jammed just before and/or during any action against you. In June of 1996, an FBI agent got hold of the Region Three BLUE List (from a CIA agent), and found his own name on it, and those of several others he knew in Virginia. The Regional BLUE List stated that the names on the BLUE List would be picked up 'within six weeks of the actual martial law declaration.' It will work if the 300,000 Soviet troops which are **ALREADY HERE** can get the guns. The ones doing all of this are operating out of the highest places in the Federal Government. They're cooperating with spirit guides and mediums and using astrology and numerology. The spirit guides are telling them what to do, and the entire thing is being orchestrated at the highest spiritual levels. Every base has been covered. They've thought of everything. They often do things on the **13th of the month. Mr. Clinton does a lot of things on the 13th.** On September 13, 1993, the Satanic Oslo Israel-PLO 'peace' accord was signed. Amos 3:7 says that God doesn't do anything without first revealing His secrets to His servants the prophets. God is giving His people warnings. If we'll listen to God, He is warning us of the times that are coming. We need to prepare. ***There will be an interim of probably just days from the time they launch the RED List, to the declaration of martial law, when they'll start coming after those on the BLUE List.*** It's the same blueprint being used because it's the same spirit leading the Fourth Reich as led the Third Reich. In Germany, they used trains, here it will be helicopters and 747s. They are now in the process of **villainizing Christians, Patriots, Constitutionalists, and outspoken talk-show hosts, HERE IN AMERIKKKA! Who will be doing the actual picking up? Foreign UN cops, probably Muslims or communists. Over 30 foreign military bases under the United Nations flag are already set up in the USA .** These bases are already manned with over ONE MILLION troops from Russia, Poland, Germany, Belgium, Turkey, Great Britain, Nicaragua, and Asian countries. They will have no qualms about firing on U.S. citizens. There are Russian tanks, military trucks and chemical warfare vehicles outside Gulfport, Mississippi. Hello? That was hit by Katrina in 2005. Anyone see heavy military equipment and foreign troops near San Francisco? The Illuminati plan way ahead! There's not going to be some future event when the invading troops are going to show up. They're already here. When martial law is implemented, these foreign U.N. troops will be policing our country, carrying out the plans of the New World Order. God is warning His people. There isn't much time before these events begin to take place. God's people need to prepare themselves in every way possible. It's not a time for fear. It's a time for prayer, preparation and sharing our faith with a lost world.

FEMA CAMPS AND THE RED AND BLUE LIST UNDER MARTIAL LAW

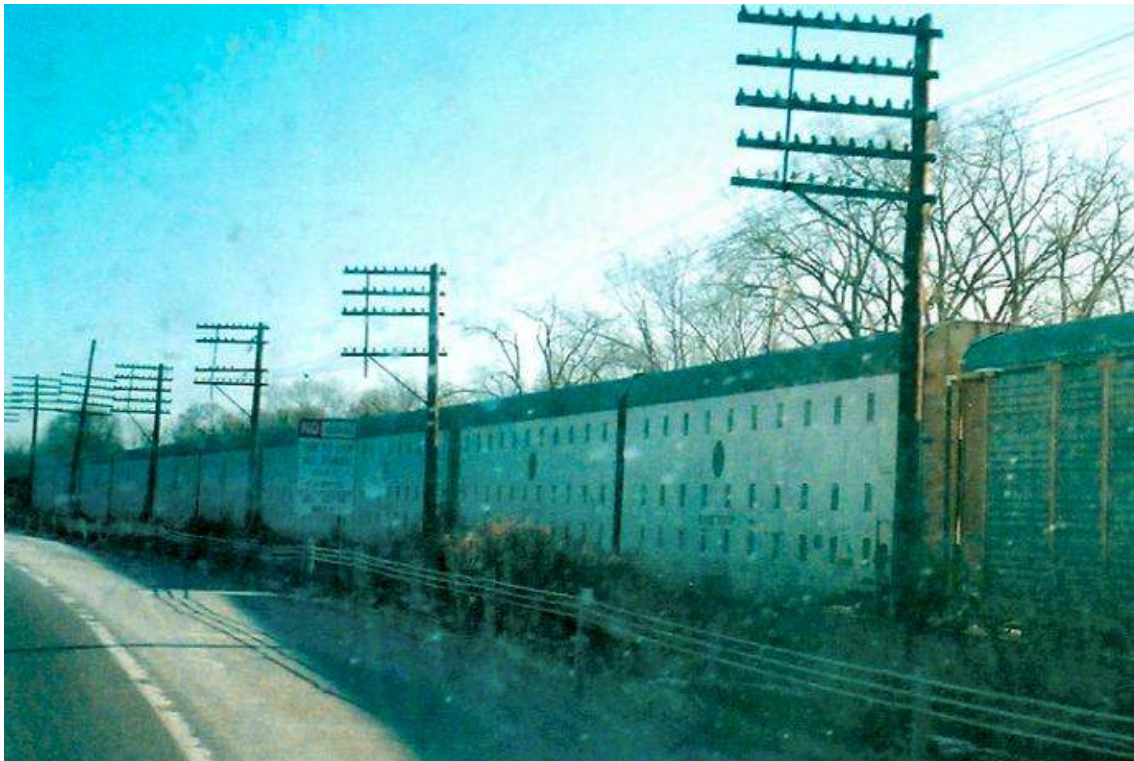


By: Pam Schuffert

While I have no doubt that the NWO-cravers at the CIA have their own list of people to round up and terminate, the actual proper agency behind the now-infamous "RED/BLUE LISTS" is none other than "FEMA BLACK OPS." FEMA is NOT here to primarily HELP YOU. Under a full state of MARTIAL LAW, FEMA is here to send you to their DETENTION CAMPS to sort out WHO SHALL live AND WHO SHALL DIE. Those unfortunates whose names are found among the MILLIONS OF FELLOW AMERICANS on FEMA RED / BLUE LISTS will never come out of the FEMA CAMPS alive, although they may have to go through hell before they are finally terminated. Such "offenders" are essentially deemed RESISTERS OF THE NEW WORLD ORDER, as my CIA and military insiders told me personally. "Oh, ALL OF US in the CIA know ALL ABOUT the concentration camps in America and their purpose! We ALL KNOW that their purpose is to TERMINATE 'RESISTERS OF THE NEW WORLD ORDER' UNDER MARTIAL LAW!" (Source-Michael Maholy, 20 years Naval Intelligence/CIA under BUSH SR) For example, THE FEMA DEATH CAMP OF THE MOJAVE is a full gassing/cremating DEATH CAMP, dedicated to the TERMINATION OF ALL ON FEMA'S RED/BLUE LIST UNDER MARTIAL LAW. I have previously documented this horrific death camp, and documented the eyewitness accounts of several former NWO supporters who were flown out there. My friends, DOC MARQUIS (Illuminati) and ELAINE KNOST (CIA/Luciferian), formerly high level Illuminati Luciferians but now Christians for many years, were both flown separately to this facility in the Mojave Desert of California. It boasts a landing strip. According to another contact, a DEA agent who personally investigated this FEMA facility, it was recently DOUBLED IN SIZE TO INCREASE KILLING CAPACITY. It is fully staffed. All staff members WEAR BLACK SWAT TEAM UNIFORMS. When I asked Doc Marquis what his sentiments were, back when he was a member of the Illuminati and given a tour of this killing facility, his reply was, "SHEER JOY! I REJOICED at the thought of CHRISTIANS BEING TERMINATED IN THIS PLACE!" A chilling response, but typical of this nation's Satanists and NWO supporters! This FEMA death camp was shown off as something the NWO and FEMA was literally PROUD OF!!! And there are MANY more FEMA detention camps whose ultimate purpose under MARTIAL LAW is NOT TO SAVE LIFE, but to TERMINATE HUMAN LIVES DEEMED UNWORTHY OF ENTERING INTO THE DAWNING OF LUCIFER'S NEW WORLD ORDER. KNOW THE COLD HARD FACTS ABOUT FEMA! And then think TWICE before going meekly to such camps under a STATE OF MARTIAL LAW in YOUR region.



These train cars seen here are not car haulers!



Locations and Executive Orders

There over 800 prison camps in the United States, all fully operational and ready to receive prisoners. They are all staffed and even surrounded by full-time guards, but they are all empty. These camps are to be operated by FEMA (Federal Emergency Management Agency) should Martial Law need to be implemented in the United States and all it would take is a presidential signature on a proclamation and the attorney general's signature on a warrant to which a list of names is attached. Ask yourself if you really want to be on Ashcroft's list. The REX 84 PROGRAM was established on the reasoning that if a "mass exodus" of illegal aliens crossed the Mexican/US border, they would be quickly rounded up and detained in detention centers by FEMA. Rex 84 allowed many military bases to be closed down and to be turned into prisons. Operation Cable Splicer and Garden Plot are the two sub programs which will be implemented once The REX 84 PROGRAM is initiated for its proper purpose. Garden Plot is the program to control the population. Cable Splicer is the program for an orderly takeover of the state and local governments by the federal government. FEMA is the executive arm of the coming police state and thus will head up all operations. The Presidential Executive Orders already listed on the Federal Register also are part of the legal framework for this operation. The camps all have railroad facilities as well as roads leading to and from the detention facilities. Many also have an airport nearby. The majority of the camps can house a population of 20,000 prisoners. Currently, the largest of these facilities is just outside of Fairbanks, Alaska. The Alaskan facility is a massive mental health facility and can hold approximately 2 million people. Now let's review the justification for any actions taken... Executive Orders associated with FEMA that would suspend the Constitution and the Bill of Rights. These Executive Orders have been on record for nearly 30 years and could be enacted by the stroke of a Presidential pen:.

OFFICIAL EXECUTIVE ORDERS LIST:

EXECUTIVE ORDER 10990

allows the government to take over all modes of transportation and control of highways and seaports.

EXECUTIVE ORDER 10995

allows the government to seize and control the communication media.

EXECUTIVE ORDER 10997

allows the government to take over all electrical power, gas, petroleum, fuels and minerals.

EXECUTIVE ORDER 10998

allows the government to seize all means of transportation, including personal cars, trucks or vehicles of any kind and total control over all highways, seaports, and waterways.

EXECUTIVE ORDER 10999

allows the government to take over all food resources and farms.

EXECUTIVE ORDER 11000

allows the government to mobilize civilians into work brigades under government supervision.

EXECUTIVE ORDER 11001

allows the government to take over all health, education and welfare functions.

EXECUTIVE ORDER 11002

designates the Postmaster General to operate a national registration of all persons.

EXECUTIVE ORDER 11003

allows the government to take over all airports and aircraft, including commercial aircraft.

EXECUTIVE ORDER 11004

allows the Housing and Finance Authority to relocate communities, build new housing with public funds, designate areas to be abandoned, and establish new locations for populations.

EXECUTIVE ORDER 11005

allows the government to take over railroads, inland waterways and public storage facilities.

EXECUTIVE ORDER 11051

specifies the responsibility of the Office of Emergency Planning and gives authorization to put all Executive Orders into effect in times of increased international tensions and economic or financial crisis.

EXECUTIVE ORDER 11310

grants authority to the Department of Justice to enforce the plans set out in Executive Orders, to institute industrial support, to establish judicial and legislative liaison, to control all aliens, to operate penal and correctional institutions, and to advise and assist the President.

EXECUTIVE ORDER 11049

assigns emergency preparedness function to federal departments and agencies, consolidating 21 operative Executive Orders issued over a fifteen year period.

EXECUTIVE ORDER 11921

allows the Federal Emergency Preparedness Agency to develop plans to establish control over the mechanisms of production and distribution, of energy sources, wages, salaries, credit and the flow of money in U.S. financial institution in any undefined national emergency. It also provides that when a state of emergency is declared by the President, Congress cannot review the action for six months. The Federal Emergency Management Agency has broad powers in every aspect of the nation. General Frank Salzedo, chief of FEMA's Civil Security Division stated in a 1983 conference that he saw FEMA's role as a "new frontier in the protection of individual and governmental leaders from assassination, and of civil and military installations from sabotage and/or attack, as well as prevention of dissident groups from gaining access to U.S. opinion, or a global audience in times of crisis." FEMA's powers were consolidated by President Carter to incorporate the... National Security Act of 1947 allows for the strategic relocation of industries, services, government and other essential economic activities, and to rationalize the requirements for manpower, resources and production facilities. 1950 Defense Production Act gives the President sweeping powers over all aspects of the economy. Act of August 29, 1916 authorizes the Secretary of the Army, in time of war, to take possession of any transportation system for transporting troops, material, or any other purpose related to the emergency. International Emergency Economic Powers Act enables the President to seize the property of a foreign country or national. These powers were transferred to FEMA in a sweeping consolidation in 1979.

Where are these camps?



ALABAMA

Opelika - Military compound either in or very near town.

Aliceville - WWII German POW camp - capacity 15,000

Ft. McClellan (Anniston) - Opposite side of town from Army Depot;

Maxwell AFB (Montgomery) - Civilian prison camp established under Operation Garden Plot, currently operating with support staff and small inmate population.

Talladega - Federal prison "satellite" camp.

ALASKA

Wilderness - East of Anchorage. No roads, Air & Railroad access only. Estimated capacity of 500,000.

Elmendorf AFB - Northeast area of Anchorage - far end of base. Garden Plot facility.

Eielson AFB - Southeast of Fairbanks. Operation Garden Plot facility.

Ft. Wainwright - East of Fairbanks.

ARIZONA

Ft. Huachuca - 20 miles from Mexican border, 30 miles from Nogales Rex '84 facility.

Pinal County - on the Gila River - WWII Japanese detention camp. May be renovated.

Yuma County - Colorado River - Site of former Japanese detention camp (near proving grounds). This site was completely removed in 1990 according to some reports.

Phoenix - Federal Prison Satellite Camp. Main federal facility expanded.

Florence - WWII prison camp NOW RENOVATED, OPERATIONAL with staff & 400 prisoners, operational capacity of 3,500.

Wickenburg - Airport is ready for conversion; total capacity unknown. Davis-Monthan AFB (Tucson) - Fully staffed and presently holding prisoners!!

Sedona - site of possible UN base.

ARKANSAS

Ft. Chaffee (near Fort Smith, Arkansas) - Has new runway for aircraft, new camp facility with cap of 40,000 prisoners.

Pine Bluff Arsenal - This location also is the repository for B-Z nerve agent, which causes sleepiness, dizziness, stupor; admitted use is for civilian control.

Jerome - Chicot/Drew Counties - site of WWII Japanese camps

Rohwer - Descha County - site of WWII Japanese camps.

Blythville AFB - Closed airbase now being used as camp. New wooden barracks have been constructed at this location. Classic decorations - guard towers, barbed wire, high fences.

Berryville - FEMA facility located east of Eureka Springs off Hwy. 62.

Omaha - Northeast of Berryville near Missouri state line, on Hwy 65 south of old wood processing plant. Possible crematory facility.

CALIFORNIA

Vandenburg AFB - Rex 84 facility, located near Lompoc & Santa Maria. Internment facility is located near the Oceanside, close to Space Launch Complex #6, also called "Slick Six". The launch site has had "a flawless failure record" and is rarely used. Norton AFB - (closed base) now staffed with UN according to some sources.

Tule Lake - area of "wildlife refuge", accessible by unpaved road, just inside Modoc County.

Fort Ord - Closed in 1994, this facility is now an urban warfare training center for US and foreign troops, and may have some "P.O.W. - C.I." enclosures.

Twenty-nine Palms Marine Base - Birthplace of the infamous "Would you shoot American citizens?" Quiz. New camps being built on "back 40".

Oakdale - Rex 84 camp capable of holding at least 20,000 people. 90 mi. East of San Francisco.

Terminal Island (Long Beach) - located next to naval shipyards operated by ChiCom shipping interests. Federal prison facility located here. Possible deportation point.

Ft. Irwin - FEMA facility near Barstow. Base is designated inactive but has staffed camp.

McClellan AFB - facility capable for 30,000 - 35,000

Sacramento - Army Depot - No specific information at this time.

Mather AFB - Road to facility is blocked off by cement barriers and a stop sign. Sign states area is restricted; as of 1997 there were barbed wire fences pointing inward, a row of stadium lights pointed toward an empty field, etc. Black boxes on poles may have been cameras.

COLORADO

Trinidad - WWII German/Italian camp being renovated.

Granada - Prowers County - WWII Japanese internment camp

Ft. Carson - Along route 115 near Canon City

CONNECTICUT, DELAWARE - No data available.

FLORIDA

Avon Park - Air Force gunnery range, Avon Park has an on-base "correctional facility" which was a former WWII detention camp.

Camp Krome - DoJ detention/interrogation center, Rex 84 facility

Eglin AFB - This base is over 30 miles long, from Pensacola to Hwy 331 in De Funiak Springs. High capacity facility, presently manned and populated with some prisoners.

Pensacola - Federal Prison Camp Everglades - It is believed that a facility may be carved out of the wilds here.

GEORGIA

Ft. Benning - Located east of Columbus near Alabama state line. Rex 84 site - Prisoners brought in via Lawson Army airfield.

Ft. Mc Pherson - US Force Command - Multiple reports that this will be the national headquarters and coordinating center for foreign/UN troop movement and detainee collection.

Ft. Gordon - West of Augusta - No information at this time.

Unadilla - Dooly County - Manned, staffed FEMA prison on route 230, no prisoners.

Oglethorpe - Macon County; facility is located five miles from Montezuma, three miles from Oglethorpe. This FEMA prison has no staff and no prisoners.

Morgan - Calhoun County - FEMA facility is fully manned & staffed - no prisoners.

Camilla - Mitchell County, south of Albany. This FEMA facility is located on Mt. Zion Rd approximately 5.7 miles south of Camilla. Unmanned - no prisoners, no staff. Hawkinsville - Wilcox County; Five miles east of town, fully manned and staffed but no prisoners. Located on fire road 100/Upper River Road.

Abbeville - South of Hawkinsville on US route 129; south of town off route 280 near Ocmulgee River. FEMA facility is staffed but without prisoners.

McRae - Telfair County - 1.5 miles west of McRae on Hwy 134 (8th St). Facility is on Irwinton Avenue off 8th St., manned & staffed - no prisoners.

Fort Gillem - South side of Atlanta - FEMA designated detention facility.

Fort Stewart - Savannah area - FEMA designated detention facility.

HAWAII

Halawa Heights area - Crematory facility located in hills above city. Area is marked as a state department of health laboratory.

Barbers Point NAS - There are several military areas that could be equipped for detention / deportation.

Honolulu - Detention transfer facility at the Honolulu airport similar in construction to the one in Oklahoma (pentagon shaped building where airplanes can taxi up to).

IDAHO

Minidoka/Jerome Counties - WWII Japanese-American internment facility possibly under renovation.

Clearwater National Forest - Near Lolo Pass - Just miles from the Montana state line near Moose Creek, this unmanned facility is reported to have a nearby airfield. Wilderness areas - Possible location.

ILLINOIS

Marseilles - Located on the Illinois River off Interstate 80 on Hwy 6. It is a relatively small facility with a cap of 1400 prisoners. Though it is small it is designed like prison facilities with barred windows, but the real smoking gun is the presence of military vehicles. Being located on the Illinois River it is possible that prisoners will be brought in by water as well as by road and air. This facility is approximately 75 miles west of Chicago. National Guard training area nearby.

Scott AFB - Barbed wire prisoner enclosure reported to exist just off-base. More info needed, as another facility on-base is believed to exist.

Pekin - This Federal satellite prison camp is also on the Illinois River, just south of Peoria. It supplements the federal penitentiary in Marion, which is equipped to handle additional population outside on the grounds.

Chanute AFB - Rantoul, near Champaign/Urbana - This closed base had WWII - era barracks that were condemned and torn down, but the medical facility was upgraded and additional fencing put up in the area. More info needed.

Marion - Federal Penitentiary and satellite prison camp inside Crab Orchard Nat'l Wildlife Refuge. Manned, staffed, populated fully.

Greenfield - Two federal correctional "satellite prison camps" serving Marion - populated as above.

Shawnee National Forest - Pope County - This area has seen heavy traffic of foreign military equipment and troops via Illinois Central Railroad, which runs through the area. Suspected location is unknown, but may be close to Vienna and Shawnee correctional centers, located 6 mi. west of Dixon Springs.

Savanna Army Depot - NW area of state on Mississippi River.

Lincoln, Sheridan, Menard, Pontiac, Galesburg - State prison facilities equipped for major expansion and close or adjacent to highways & railroad tracks.

Kankakee - Abandoned industrial area on west side of town (Rt.17 & Main) designated as FEMA detention site. Equipped with water tower, incinerator, a small train yard behind it and the rear of the facility is surrounded by barbed wire facing inwards.

INDIANA

Indianapolis / Marion County - Amtrak railcar repair facility (closed); controversial site of a major alleged detention / processing center. Although some sources state that this site is a "red herring", photographic and video evidence suggests otherwise. This large facility contains large 3-4 inch gas mains to large furnaces (crematoria?), helicopter landing pads, railheads for prisoners, Red/Blue/Green zones for classifying and processing incoming personnel, one-way turnstiles, barracks, towers, high fences with razor wire, etc. Personnel with government clearance who are friendly to the patriot movement took a guided tour of the facility to confirm this site. This site is located next to a closed refrigeration plant facility.

Ft. Benjamin Harrison - Located in the northeast part of Indianapolis, this base has been decommissioned from "active" use but portions are still ideally converted to hold detainees. Helicopter landing areas still exist for prisoners to be brought in by air, land & rail.

Crown Point - Across street from county jail, former hospital. One wing presently being used for county work-release program, 80% of facility still unused. Possible FEMA detention center or holding facility.

Camp Atterbury - Facility is converted to hold prisoners and boasts two active compounds presently configured for minimum security detainees. Located just west of Interstate 65 near Edinburgh, south of Indianapolis.

Terre Haute - Federal Correctional Institution, Satellite prison camp and death facility. Equipped with crematoria reported to have a capacity of 3,000 people a day. FEMA designated facility located here.

Fort Wayne - This city located in Northeast Indiana has a FEMA designated detention facility, accessible by air, road and nearby rail.

Kingsbury - This "closed" military base is adjacent to a state fish & wildlife preserve. Part of the base is converted to an industrial park, but the southern portion of this property is still used. It is bordered on the south by railroad, and is staffed with some foreign-speaking UN troops. A local police officer who was hunting and camping close to the base in the game preserve was accosted, roughed up, and warned by the English-speaking unit commander to stay away from the area. It was suggested to the officer that the welfare of his family would depend on his "silence". Located just southeast of LaPorte.

Jasper-Pulaski Wildlife Area - Youth Corrections farm located here. Facility is "closed", but is still staffed and being "renovated". Total capacity unknown.

Grissom AFB - This closed airbase still handles a lot of traffic, and has a "stateowned" prison compound on the southern part of the facility. UNICOR.

Jefferson Proving Grounds - Southern Indiana - This facility was an active base with test firing occurring daily. Portions of the base have been opened to create an industrial park, but other areas are still highly restricted. A camp is believed to be located "downrange". Facility is equipped with an airfield and has a nearby rail line. *Member Update:* The base has been opened in the aspect that the sector with the Barracks and storage facilities have been turned into low income housing and an industrial park. It is a rather large area, that there is also some farm land being developed on. The sectors that are still closed are the testing ranges and the surrounding areas. They will remain closed and under military control indefinitely. This is due to the large amount of unexploded ordinance and DU. There are sections in the northern half that are accessible to the public inside the restricted areas. They include Old Timbers Lodge and Old Timbers Public fishing area. Now to the rail Line there is a rail line that runs into JPG it hasn't been used and is covered almost completely with rail cars that have not been moved since the closure. The airfields are unusable both are deteriorated the large one is also covered in leftover FEMA trailers from Katrina. They are slowly being sold off one to private individuals. The reason I know so much about JPG is I live right up the road from it, many of my family members have worked there for years, and I ride my Motorcycle all over the it. You can google earth the Facility and see it is in a large part wooded you can also go to the link below and view images from inside the restricted area some of which include unexploded ordnance and Radiation Warning Signs. Just as a note a large portion of JPG is now owned by a private individual named Dean Ford which I am including an article about also.

Newport Army Depot - VX nerve gas storage facility. Secret meetings were held here in 1998 regarding the addition of the Kankakee River watershed to the Heritage Rivers Initiative.

Hammond - large enclosure identified in FEMA-designated city.

IOWA

No data available.

KANSAS

Leavenworth - US Marshal's Fed Holding Facility, US Penitentiary, Federal Prison Camp, McConnell Air Force Base. Federal death penalty facility.

Concordia - WWII German POW camp used to exist at this location but there is no facility there at this time.

Ft. Riley - Just north of Interstate 70, airport, near city of Manhattan.

El Dorado - Federal prison converted into forced-labor camp, UNICOR industries.

Topeka - 80 acres has been converted into a temporary holding camp.

KENTUCKY

Ashland - Federal prison camp in Eastern Kentucky near the Ohio River. **Louisville** - FEMA detention facility, located near restricted area US naval ordnance plant. Military airfield located at facility, which is on south side of city.

Lexington - FEMA detention facility, National Guard base with adjacent airport facility.

Manchester - Federal prison camp located inside Dan Boone National Forest.

Ft. Knox - Detention center, possibly located near Salt River, in restricted area of base. Local patriots advise that black Special Forces & UN gray helicopters are occasionally seen in area.

Land Between the Lakes - This area was declared a UN biosphere and is an ideal geographic location for detention facilities. Area is an isthmus extending out from Tennessee, between Lake Barkley on the east and Kentucky Lake on the west. Just scant miles from Fort Campbell in Tennessee.

LOUISIANA

Ft. Polk - This is a main base for UN troops & personnel, and a training center for the disarmament of America.

Livingston - WWII German/Italian internment camp being renovated?; halfway between Baton Rouge and Hammond, several miles north of Interstate 12.

Oakdale - Located on US route 165 about 50 miles south of Alexandria; two federal detention centers just southeast of Fort Polk.

MAINE

Houlton - WWII German internment camp in Northern Maine, off US Route 1.

MARYLAND, and DC

Ft. Meade - Halfway between the District of Criminals and Baltimore. Data needed.

Ft. Detrick - Biological warfare center for the NWO, located in Frederick.

MASSACHUSETTS

Camp Edwards / Otis AFB - Cape Cod - This "inactive" base is being converted to hold many New Englander patriots. Capacity unknown.

Ft. Devens - Active detention facility. More data needed.

MICHIGAN

Camp Grayling - Michigan Nat'l Guard base has several confirmed detention camps, classic setup with high fences, razor wire, etc. Guard towers are very well-built, sturdy. Multiple compounds within larger enclosures. Facility deep within forest area.

Sawyer AFB - Upper Peninsula - south of Marquette - No data available.

Bay City - Classic enclosure with guard towers, high fence, and close to shipping port on Saginaw Bay, which connects to Lake Huron. Could be a deportation point to overseas via St. Lawrence Seaway.

Southwest - possibly Berrien County - FEMA detention center.

Lansing - FEMA detention facility.

MINNESOTA

Duluth - Federal prison camp facility.

Camp Ripley - new prison facility.

MISSISSIPPI

These sites are confirmed hoaxes.

Hancock County - NASA test site De Soto National Forest. "These two supposed camps in Mississippi do not exist. Members of the Mississippi Militia have checked these out on more than one occasion beginning back when they first appeared on the Internet and throughout the Patriot Movement." - Commander D. Rayner, Mississippi Militia

MISSOURI

Richards-Gebaur AFB - located in Grandview, near K.C.MO. A very large internment facility has been built on this base, and all base personnel are restricted from coming near it. This site was documented in early 2008 by B.A. Brooks. You can watch the video and read about what is being called the Kansas City Connection to The NAU/SPP here: Richards Gebaur = NAU/SPP Proof - http://www.uaff.us/nau_proof.wmv. No internment camps were found.

Ft. Leonard Wood - Situated in the middle of Mark Twain National Forest in Pulaski County. This site has been known for some UN training, also home to the US Army Urban Warfare Training school "Stem Village".

Warsaw - Unconfirmed report of a large concentration camp facility.

MONTANA

Malmstrom AFB - UN aircraft groups stationed here, and possibly a detention facility.

NEBRASKA

Scottsbluff - WWII German POW camp (renovated?). Northwest, Northeast corners of state - FEMA detention facilities - more data needed. South Central part of state - Many old WWII sites - some may be renovated.

NEVADA

Elko - Ten miles south of town. Wells - Camp is located in the O'Neil basin area, 40 miles north of Wells, past Thousand Springs, west off Hwy 93 for 25 miles.

Pershing County - Camp is located at I-80 mile marker 112, south side of the highway, about a mile back on the county road and then just off the road about 3/4mi.

Winnemucca - Battle Mountain area - at the base of the mountains.

Nellis Air Force Range - Northwest from Las Vegas on Route 95. Nellis AFB is just north of Las Vegas on Hwy 604.

Stillwater Naval Air Station - east of Reno . No additional data.

NEW HAMPSHIRE / VERMONT

Northern New Hampshire - near Lake Francis. No additional data.

NEW JERSEY

Ft. Dix / McGuire AFB - Possible deportation point for detainees. Lots of pictures taken of detention compounds and posted on Internet, this camp is well-known. Facility is now complete and ready for occupancy.

NEW MEXICO

Ft. Bliss - This base actually straddles Texas state line. Just south of Alomogordo, Ft. Bliss has thousands of acres for people who refuse to go with the "New Order". **Holloman AFB (Alomogordo)** - Home of the German Luftwaffe in Amerika; major UN base. New facility being built on this base, according to recent visitors. Many former USAF buildings have been torn down by the busy and rapidly growing German military force located here.

Fort Stanton - currently being used as a youth detention facility approximately 35 miles north of Ruidoso, New Mexico. Not a great deal of information concerning the Lordsburg location.

White Sands Missile Range - Currently being used as a storage facility for United Nations vehicles and equipment. Observers have seen this material brought in on the White Sands rail spur in Oro Grande New Mexico about thirty miles from the Texas, New Mexico Border.

NEW YORK

Ft. Drum - two compounds: Rex 84 detention camp and FEMA detention facility.

Albany - FEMA detention facility.

Otisville - Federal correctional facility, near Middletown. Buffalo - FEMA detention facility.

NORTH CAROLINA

Camp Lejeune / New River Marine Airfield - facility has renovated, occupied WWII detention compounds and "mock city" that closely resembles Anytown, USA.

Fort Bragg - Special Warfare Training Center. Renovated WWII detention facility.

Andrews - Federal experiment in putting a small town under siege. Began with the search/ hunt for survivalist Eric Rudolph. No persons were allowed in or out of town without federal permission and travel through town was highly restricted. Most residents compelled to stay in their homes. Unregistered Baptist pastor from Indiana visiting Andrews affirmed these facts.

NORTH DAKOTA

Minot AFB - Home of UN air group. More data needed on facility.

OHIO

Camp Perry - Site renovated; once used as a POW camp to house German and Italian prisoners of WWII. Some tar paper covered huts built for housing these prisoners are still standing. Recently, the construction of multiple 200-man barracks have replaced most of the huts.

Cincinnati, Cleveland, Columbus - FEMA detention facilities. Data needed.

Lima - FEMA detention facility. Another facility located in/near old stone quarry near Interstate 75. Railroad access to property, fences etc.

OKLAHOMA

Tinker AFB (OKC) - All base personnel are prohibited from going near civilian detention area, which is under constant guard.

Will Rogers World Airport - FEMA's main processing center for west of the Mississippi. All personnel are kept out of the security zone. Federal prisoner transfer center located here (A pentagon-shaped building where airplanes can taxi up to).

El Reno - Renovated federal internment facility with CURRENT population of 12,000 on Route 66.

McAlester - near Army Munitions Plant property - former WWII German / Italian POW camp designated for future use.

Ft. Sill (Lawton) - Former WWII detention camps. More data still needed.

OREGON

Sheridan - Federal prison satellite camp northwest of Salem.

Josephine County - WWII Japanese internment camp ready for renovation.

Sheridan - FEMA detention center.

Umatilla - New prison spotted.

PENNSYLVANIA

Allenwood - Federal prison camp located south of Williamsport on the Susquehanna River. It has a current inmate population of 300, and is identified by William Pabst as having a capacity in excess of 15,000 on 400 acres.

Indiantown Gap Military Reservation - located north of Harrisburg. Used for WWII POW camp and renovated by Jimmy Carter. Was used to hold Cubans during Mariel boat lift.

Camp Hill - State prison close to Army depot. Lots of room, located in Camp Hill, Pa.

New Cumberland Army Depot - on the Susquehanna River, located off Interstate 83 and Interstate 76.

Schuylkill Haven - Federal prison camp, north of Reading.

SOUTH CAROLINA

Greenville - Unoccupied youth prison camp; total capacity unknown.

Charleston - Naval Reserve & Air Force base, restricted area on naval base.

SOUTH DAKOTA

Yankton - Federal prison camp

Black Hills Nat'l Forest - north of Edgemont, southwest part of state. WWII internment camp being renovated.

TENNESSEE

Ft. Campbell - Next to Land Between the Lakes; adjacent to airfield and US Alt. 41.

Millington - Federal prison camp next door to Memphis Naval Air Station.

Crossville - Site of WWII German / Italian prison camp is renovated; completed barracks and behind the camp in the woods is a training facility with high tight ropes and a rappelling deck.

Nashville - There are two buildings built on State property that are definitely built to hold prisoners. They are identical buildings - side by side on Old Briley Parkway. High barbed wire fence that curves inward.

TEXAS

Austin - Robert Mueller Municipal airport has detention areas inside hangars.

Bastrop - Prison and military vehicle motor pool.

Eden - 1500 bed privately run federal center. Currently holds illegal aliens.

Ft. Hood (Killeen) - Newly built concentration camp, with towers, barbed wire etc., just like the one featured in the movie Amerika. Mock city for NWO shock- force training. Some footage of this area was used in "Waco: A New Revelation"

Reese AFB (Lubbock) - FEMA designated detention facility.

Sheppard AFB - in Wichita Falls just south of Ft. Sill, OK. FEMA designated detention facility.

North Dallas - near Carrollton - water treatment plant, close to interstate and railroad.

Mexia - East of Waco 33mi.; WWII German facility may be renovated.

Amarillo - FEMA designated detention facility.

Ft. Bliss (El Paso) - Extensive renovation of buildings and from what patriots have been able to see, many of these buildings that are being renovated are being surrounded by razor wire.

Beaumont / Port Arthur area - hundreds of acres of federal camps already built on large-scale detention camp design, complete with the double rows of chain link fencing with razor type concertina wire on top of each row. Some (but not all) of these facilities are currently being used for low-risk state prisoners who require a minimum of supervision.

Ft. Worth - Federal prison under construction on the site of Carswell AFB.

UTAH

Millard County - Central Utah - WWII Japanese camp. (Renovated?)

Ft. Douglas - This "inactive" military reservation has a renovated WWII concentration camp.

Migratory Bird Refuge - West of Brigham City - contains a WWII internment camp that was built before the game preserve was established.

Cedar City - east of city - no data available.

Wendover - WWII internment camp may be renovated.

Skull Valley - southwestern Camp William property - east of the old bombing range. Camp was accidentally discovered by a man and his son who were rabbit hunting; they were discovered and apprehended. SW of Tooele.

VIRGINIA

Ft. A.P. Hill (Fredericksburg) - Rex 84 / FEMA facility. Estimated capacity 45,000.

Petersburg - Federal satellite prison camp, south of Richmond.

WEST VIRGINIA

Beckley - Alderson - Lewisburg - Former WWII detention camps that are now converted into active federal prison complexes capable of holding several times their current populations. Alderson is presently a women's federal reformatory.

Morgantown - Federal prison camp located in northern WV; just north of Kingwood.

Mill Creek - FEMA detention facility.

Kingwood - Newly built detention camp at Camp Dawson Army Reservation. More data needed on Camp Dawson.

WASHINGTON

Seattle/Tacoma - SeaTac Airport: fully operational federal transfer center

Okanogan County - Borders Canada and is a site for a massive concentration camp capable of holding hundreds of thousands of people for slave labor. This is probably one of the locations that will be used to hold hard core patriots who will be held captive for the rest of their lives.

Sand Point Naval Station - Seattle - FEMA detention center used actively during the 1999 WTO protests to classify prisoners.

Ft. Lewis/McChord AFB - near Tacoma - This is one of several sites that may be used to ship prisoners overseas for slave labor.

WISCONSIN

Ft. McCoy - Rex 84 facility with several complete interment compounds.

Oxford - Federal prison & satellite camp and FEMA detention facility.

WYOMING

Heart Mountain - Park County N. of Cody - WWII Japanese internment camp ready for renovation.

Laramie - FEMA detention facility Southwest - near Lyman - FEMA detention facility East Yellowstone - Manned internment facility - Investigating patriots were apprehended by European soldiers speaking in an unknown language. Federal government assumed custody of the persons and arranged their release.

OTHER LOCATIONS IN THE UNITED STATES

There are many other locations not listed above that are worthy of consideration as a possible detention camp site, but due to space limitations and the time needed to verify, could not be included here. Virtually all military reservations, posts, bases, stations, & depots can be considered highly suspect (because it is "federal" land). Also fitting this category are "Regional Airports" and "International Airports" which also fall under federal jurisdiction and have limited-access areas. Mental hospitals, closed hospitals & nursing homes, closed military bases, wildlife refuges, state prisons, toxic waste dumps, hotels and other areas all have varying degrees of potential for being a detention camp area. The likelihood of a site being suspect increases with transportation access to the site, including airports/airstrips, railheads, navigable waterways & ports, interstate and US highways. Some facilities are "disguised" as industrial or commercial properties, camouflaged or even wholly contained inside large buildings (Indianapolis) or factories. Many inner-city buildings left vacant during the de-industrialization of America have been quietly acquired and held, sometimes retrofitted for their new uses.

CANADA

Our Canadian friends tell us that virtually all Canadian military bases, especially those north of the 50th Parallel, are all set up with concentration camps. Not even half of these can be listed, but here are a few sites with the massive land space to handle any population:

Suffield CFB - just north of Medicine Hat, less than 60 miles from the USA.

Primrose Lake Air Range - 70 miles northeast of Edmonton.

Wainwright CFB - halfway between Medicine Hat and Primrose Lake.

Ft. Nelson - Northernmost point on the BC Railway line.

Ft. McPherson - Very cold territory ~ NW Territories.

Ft. Providence - Located on Great Slave Lake.

Halifax - Nova Scotia. Dept. of National Defense reserve.... And others.

OTHER LOCATIONS IN THE UNITED STATES

There are many other locations not listed above that are worthy of consideration as a possible detention camp site, but due to space limitations and the time needed to verify, could not be included here. Virtually all military reservations, posts, bases, stations, & depots can be considered highly suspect (because it is "federal" land). Also fitting this category are "Regional Airports" and "International Airports" which also fall under federal jurisdiction and have limited-access areas. Mental hospitals, closed hospitals & nursing homes, closed military bases, wildlife refuges, state prisons, toxic waste dumps, hotels and other areas all have varying degrees of potential for being a detention camp area. The likelihood of a site being suspect increases with transportation access to the site, including airports/airstrips, railheads, navigable waterways & ports, interstate and US highways. Some facilities are "disguised" as industrial or commercial properties, camouflaged or even wholly contained inside large buildings (Indianapolis) or factories. Many inner-city buildings left vacant during the de-industrialization of America have been quietly acquired and held, sometimes retrofitted for their new uses.

CANADA

Our Canadian friends tell us that virtually all Canadian military bases, especially those north of the 50th Parallel, are all set up with concentration camps. Not even half of these can be listed, but here are a few sites with the massive land space to handle any population.

Suffield CFB - just north of Medicine Hat, less than 60 miles from the USA.

Primrose Lake Air Range - 70 miles northeast of Edmonton.

Wainwright CFB - halfway between Medicine Hat and Primrose Lake.

Ft. Nelson - Northernmost point on the BC Railway line.

Ft. McPherson - Very cold territory ~ NW Territories. Ft. Providence - Located on Great Slave Lake.

Halifax - Nova Scotia. Dept. of National Defense reserve.... And others.

OVERSEAS LOCATIONS

Guayanabo, Puerto Rico - Federal prison camp facility. Capacity unknown.

Guantanamo Bay, Cuba - US Marine Corps Base - Presently home to 30,000 Mariel Cubans and 40,000 Albanians. Total capacity unknown.

Resource: Friends Of Liberty News archives

© 2009 B.A. Brooks All Rights Reserved



FEMA

The New F... Word

T-Shirts Available Now!

<http://www.cafepress.com/uaffstore/5640905>

RESOURCES

Brigade homeland tours starting October 1st

http://www.armytimes.com/news/2008/09/army_homeland_090708w/

FEMA's Citizen Corps Partners With United States Power Squadron

<http://www.fema.gov/news/newsrelease.fema?id=47622>

National Level FEMA Exercise 2009 (NLE 09)

http://www.fema.gov/media/fact_sheets/nle09.shtm

(HR 645)

<http://www.govtrack.us/congress/billtext.xpd?bill=h111-645>

Miami Herald FEMA Exposed PDF

<http://www.uaff.us/chardy-shadow-government.pdf>

Military Police Internment/Resettlement Operations PDF

http://www.uaff.us/fm3_19_40.pdf

Civilian Inmate Labor Facilities PDF

http://www.uaff.us/r210_35.pdf

Homeland Security Enlists Clergy to Quell Public Unrest if Martial Law Ever Declared

<http://www.ksla.com/Global/story.asp?S=6937987>

Rex 84

http://en.wikipedia.org/wiki/Rex_84

Operation Gardenplot

http://www.uaff.us/2005_mil_dictatorship.pdf

FEMA Coffins Debunked By Freedom Fighter Radio

<http://www.youtube.com/watch?v=wQzYoWUPfDk>

Operation Cable Splicer

http://www.sourcewatch.org/index.php?title=Operation_Cable_Splicer

FEMA to take over mass care role formerly held by Red Cross

<http://www.govexec.com/dailyfed/0308/030708kp1.htm>

Jefferson Proving Grounds

<http://www.jpgheritage.org/id111.html>

Homeland Security Contracts for Vast New Detention Camps

http://news.pacificnews.org/news/view_article.html?article_id=eed74d9d44c30493706fe03f4c9b3a77

**For more info visit:
<http://www.uaaff.us>**

Things You Never Knew About FEMA

2009 B.A. Brooks All Rights Reserved